

Risk Engine Adapter

Risk Based Authentication Adapter Specification V1.5.0

About Risk Adapter

When Cardholder authentication occurs during a transaction, a challenge may be necessary because the transaction is deemed high-risk, e.g. above certain thresholds.

To assess the risk associated with the transaction and if a challenge to the Cardholder is necessary, the ACS sends/receives proper data elements to/from risk assessment systems via middleware, known as Risk Adapters .

How RBA works

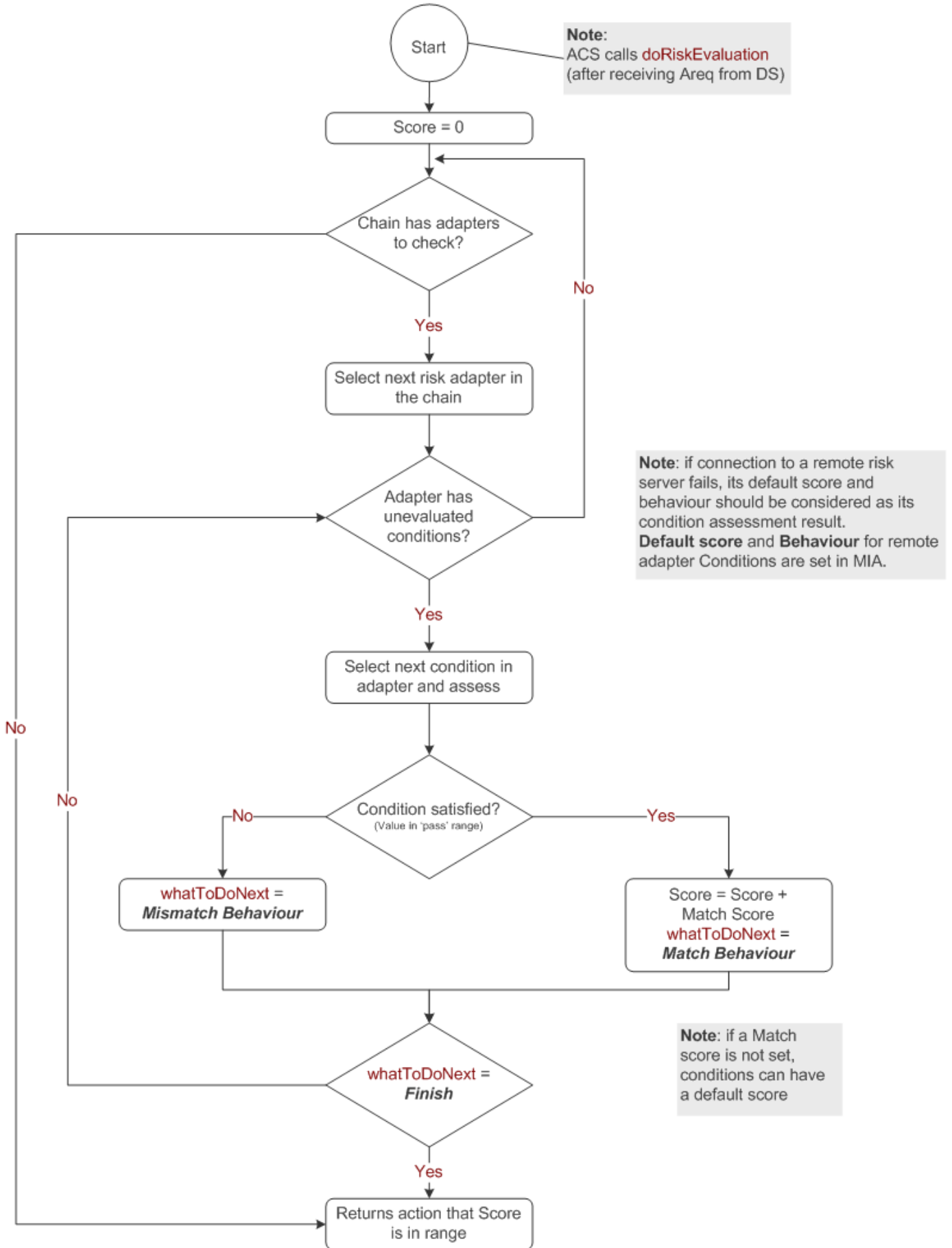
ActiveAccess has been developed to support risk through the following models:

- **Internal Risk:** Risk rules pre-defined internally within the application by GPayments. This may include samples or rules commonly used by issuers. The rules are configurable on the Administration UI.
- **External Risk via Adapter:** You can create your customised rules in the form of JAR files, as per the [Risk Adapter Specification](#). Once the path of the JAR files has been included in the ActiveAccess configuration file (`<AA_HOME>/activeaccess.properties`), the rules will be configurable on the Administration UI in the same way as the Internal Risk model. Basic or complex rules can be defined based on the issuer's specific requirements
- **Remote Risk via Adapter:** Rules are defined on an external server and called by ActiveAccess using a URL configured on the Administration UI.

The RBA adapters are also designed to have a configurable scoring system. Scoring is fully configurable and each score range can be linked with an authentication method: frictionless, frictionless with review, static password, device or OOB.

The following diagram provides an overview of the risk evaluation process.

Risk Evaluation



Each **Risk Adapter** has one **Parameter** and one or more **Conditions**. Risk assessment systems perform tasks based on values received for these attributes. **Risk Adapters** can be either Native APIs or REST APIs. These Risk Adapter APIs are explained in further detail in the following sections.

The following diagram shows how risk chains are setup and risk adapters are registered on the Administration UI.

Risk chain setup

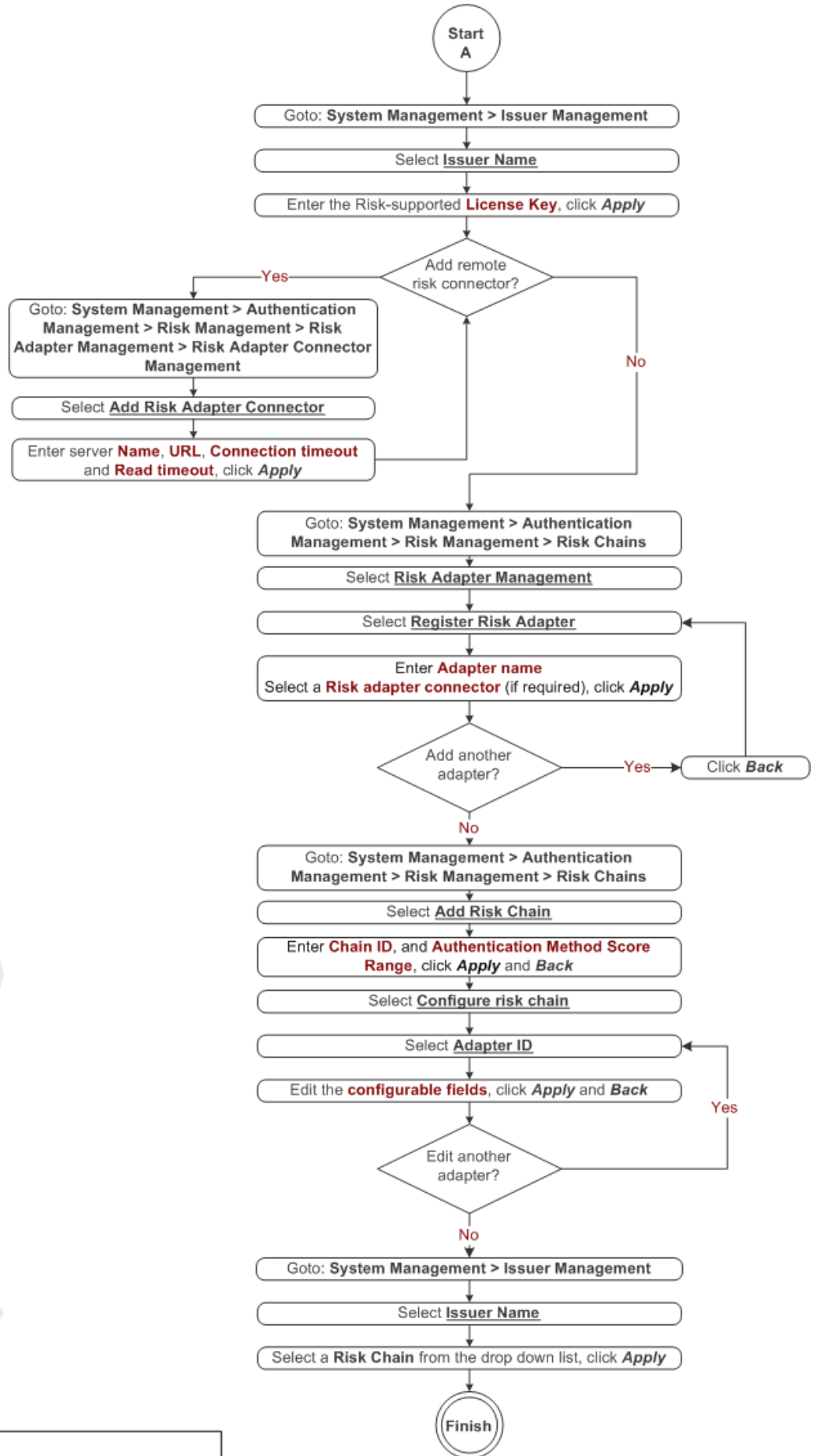
Associate risk-supported license key with Issuer

Setup risk connector

Register risk adapters

Setup risk chains and configure risk adapters

Assign risk chain to issuer



Note:

- Remote risk connector should be accessible when

Risk Adapter Specification

Native API Risk Adapter

The Native API Risk Adapter is a JAR file that implements an `ACS` specified adapter interface, known as `Adapter`, in a JAR file named `rba.adapter`. Note that you can rename your `Risk Adapters` as appropriate for your use.

Adapter development considerations

The following steps must be considered in `Risk Adapter` development:

1. Use the correct version of `risk.adapter-x` for your `ACS` version (where `x` represents the risk adapter API version) in your `Risk Adapter` project.
2. The `Adapter` interface in the `risk.adapter-x` JAR file must be implemented in your `Risk Adapter` project. This implementation is known as the *risk adapter provider*. The `ACS` loads this class at startup and uses it for transaction risk assessment. The `ACS` enforces the requirement for the *provider class* to have a public zero-argument constructor so that it can be instantiated during `ACS` loading.
3. A *risk adapter provider* is identified by placing a *provider-configuration file* in the resource directory `META-INF/services`. The file's name is the fully-qualified binary name of the service's type, e.g. `com.gpayments.rba.api.v1.Adapter`. The file contains a list of fully-qualified binary names of concrete provider classes, one per line. Space and tab characters surrounding each name, as well as blank lines, are ignored. The comment character is `'#'` (`'\u0023'`, NUMBER SIGN); on each line all characters following the first comment character are ignored. The file must be encoded in `UTF-8`.

Adapter interface methods

The `Adapter` interface has four methods, which must be implemented in `Risk Adapter`:

- **Method Name:** `getAdapterId`
 - **Description:** Returns the `ACS` assigned `UUID` to `Risk Adapter`
 - **Input:** This method takes no arguments.
 - **Output:** The output of this method has the following properties:
 - **Description:** `Risk Adapter` ID.

- **Length:** 36 characters
- **Format:** String
- **Accepted Value:** Canonical format as defined in IETF RFC 4122
- **Message Inclusion:** Required

• **Method Name:** `getAdapterInfo`


- **Description:** Returns some information about `Risk Adapter`
- **Input:** This method takes no arguments
- **Output:** An instance of `AdapterInfo` class that contains some information about `Risk Adapter` `AdapterInfo` is described in [AdapterInfo Data Elements](#)

• **Method Name:** `getParameter`

- **Description:** Returns the used `Parameter` in the `Risk Adapter` .
- **Input:** This method takes no arguments.
- **Output:** An instance of `Parameter` class that contains some information about the used `Parameter` in Adapter conditions The `Parameter` class is Described in [Parameter Data Elements](#)

• **Method Name:** `getConditions`

- **Description:** Returns a list of `Risk Adapter` conditions
- **Input:** This method takes no arguments.
- **Output:** List of available `Conditions` in `Risk Adapter` . The `Condition` class is described in [Condition Data Elements](#)

• **Method Name:**  `sendTransactionResult`

- **Description:** Send transaction result to `Risk Adapter`
- **Input:** This method takes one argument of type `String` . The format of this argument is a JSON object of type `AdapterTransactionResult` described in [AdapterTransactionResult Data Elements](#).
- **Output:** This method does not have a return type.

RESTful API Risk Adapter

For the RESTful API **Risk Adapter**, you should provide REST API endpoints that are accessible to the **ACS**. Note that **Adapter-URL** refers to the fully qualified RESTful **Risk Adapter** URL that will be used in transaction risk assessment.

Note

We also provide a Swagger API for the sample REST RBA server that is included in the release package. To use it, run RBA Server and open <https://localhost:8446/swagger-ui.html#/> in your browser.

Get Risk Adapter Information

The **ACS** sends an HTTP request to retrieve information about **Risk Adapter**, as follows:

- **URL:** **Adapter-URL**
- **Request Method:** GET
- **Request Parameters:** there is no request parameter for this REST API
- **Response:**
 - **Name:** restfulRBAAdapterInfo
 - **Format** JSON object of **RestfulRBAAdapterInfo** type.
 - **Description** **RestfulRBAAdapterInfo**. Described in [RestfulRBAAdapterInfo Data Elements](#)
 - **Inclusion:** Required

Transaction Risk Assessment

To estimate the risk for the transaction, the **ACS** calls an HTTP API of RESTful **Risk Adapter**, as follows:

- **URL:** **Adapter-URL**
- **Request Method:** POST
- **Request Body:**
 - **Name:** remoteAssessmentRequest
 - **Format:** JSON object of type **RemoteAssessmentRequest**, described in [RemoteAssessmentRequest Data Elements](#)

- **Inclusion:** Required
- **Response:**
 - **Name:** assessmentResult
 - **Format:** JSON object of type `AssessmentResult`, described in [AssessmentResult Data Elements](#)
 - **Inclusion:** Required

+ Send Transaction Result

To send the transaction result, the `ACS` calls an HTTP API of RESTful `Risk Adapter` as follows:

- **URL:** `Adapter-URL /transaction-result/{acsTransactionId}`
- **Request Method:** POST
- **Path Variable:** `acsTransactionId`
- **Request Body:**
 - **Name:** transactionResult
 - **Format:** JSON object of type `AdapterTransactionResult`, described in [AdapterTransactionResult Data Elements](#)
 - **Inclusion:** Required
- **Response:** Payload is optional in this HTTP Response message

Authentication mechanism for the RESTful API

Certificate based mutual authentication is used as the authentication mechanism for the RESTful API, using the following steps:

- `ACS` publishes a CA for adapter communication, in this instance named `Adapter CA`
- `ACS` also issues a server certificate for the adapter. The server certificate should have a serial number attribute set to the AA generated Adapter ID or something to identify the RESTful adapter.
- `ACS` uses a client generated certificate issued by the same `Adapter CA`.
- the Adapter server implementation must be setup with the CA provided and mutual authentication.

- **ACS** will try to connect to the Adapter Server and, if the connection can be established and the serial number matches the record in the database for this adapter, **ACS** will continue with the adapter otherwise it will throw an error.
-

AdapterInfo Data Elements

- **Field Name:** `id`
 - **Description:** The **ACS** assigned *UUID* to the **Risk Adapter**
 - **Length:** 36 characters
 - **Format:** String
 - **Accepted Value:** Canonical format as defined in IETF RFC 4122
 - **Message Inclusion:** Required
- **Field Name:** `name`
 - **Description:** The **ACS** assigned *name* to the **Risk Adapter**
 - **Length:** Variable, maximum 100 Characters
 - **Format:** String
 - **Accepted Value:**
 - **Message Inclusion:** Required
- **Field Name:** `version`
 - **Description:** The number that indicates the **Risk Adapter** API version
 - **Length:** Variable
 - **Format:** String
 - **Accepted Value:** Supported versions can be found in [Current Supported Versions](#) section.
 - **Message Inclusion:** Required
- **Field Name:** `signature`
 - **Description:** Signature to validate **Risk Adapter** integrity, currently not used, will be introduced in a future version
 - **Length:** Variable

- **Format:** String
 - **Accepted Value:**
 - **Message Inclusion:** Optional
-

Parameter Data Elements

- **Field Name:** `name`
 - **Description:** The `Risk Adapter` *name* assigned to this parameter
 - **Length:** 50 characters
 - **Format:** String
 - **Accepted Value:** any
 - **Message Inclusion:** Required
- **Field Name:** `displayName`
 - **Description:** The `Risk Adapter` assigned *name* for displaying this parameter
 - **Length:** 50 characters
 - **Format:** String
 - **Accepted Value:** any
 - **Message Inclusion:** Required
- **Field Name:** `paramType`
 - **Description:** The type of Risk Adapter `Parameter` .
 - **Length:**
 - **Format:** ValueType. `ValueType` is described in [ValueType Data Elements](#).
 - **Accepted Value:** NULL, NUMERIC, STRING, RANGE, LIST_OF_NUMERIC and LIST_OF_STRING
 - **Message Inclusion:** Required
- **Field Name:** `validator`
 - **Description:** A validator for this `Parameter` . This validator is an instance of a class that implements the `ParameterValidator` interface.
 - **Length:**

- **Format:** An instance of `ParameterValidator` interface implementor. **This field should be ignored in mapping the `Parameter` object to the JSON object**
- **Accepted Value:**
- **Message Inclusion:**

The `ParameterValidator` interface has a method named `isParameterDataValid` and returns the *boolean* result of parameter validation. This method takes two arguments: * The first argument of this method, is an instance of type `AReq`, described in [AReq Data Elements](#). * The second is an instance of a callback class that implements `TxCallback`. `TxCallback` is described in [TxCallback Data Elements](#).

Condition Data Elements

- **Field Name:** `adapter`
 - **Description:** The `Adapter` that the current `Condition` belongs to; a reference to the current adapter
 - **Length:**
 - **Format:** An instance of type `Adapter`. **This field should be ignored in mapping `Condition` object to JSON object**
 - **Accepted Value:**
 - **Message Inclusion:** Required
- **Field Name:** `boundParameter`
 - **Description:** The `Parameter` that is used in this adapter. The current `Condition` uses it in the risk assessment process; a reference to the current Risk Adapter Parameter
 - **Length:**
 - **Format:**
 - **Accepted Value:**
 - **Message Inclusion:** Required
- **Field Name:** `name`
 - **Description:** The `Risk Adapter` *name* assigned to this condition
 - **Length:** 50 characters

- **Format:** String
 - **Accepted Value:** any
 - **Message Inclusion:** Required
 - **Field Name:** `displayName`
 - **Description:** The `Risk Adapter` name assigned for displaying this condition
 - **Length:** 50 characters
 - **Format:** String
 - **Accepted Value:** any
 - **Message Inclusion:** Required
 - **Field Name:** `valueType`
 - **Description:** The value types that should be set for `Condition` values
 - **Length:**
 - **Format:** `ValueType`
 - **Accepted Value:** NULL, NUMERIC, STRING, RANGE, LIST_OF_NUMERIC and LIST_OF_STRING
 - **Message Inclusion:** Required
 - **Field Name:** `assessor`
 - **Description:** The condition assessor that is assigned to the adapter `Condition` and is responsible for getting the condition assessment result
 - **Length:**
 - **Format:** An instance of `ConditionAssessor` interface implementor. `ConditionAssessor` interface is described in [ConditionAssessor Data Elements](#)
This field should be ignored in mapping the `Condition` object to the JSON object.
 - **Accepted Value:**
 - **Message Inclusion:** Required
-

ValueType Data Elements

`ValueType` is an enum type with six constants that represent the type of the value. These named constants are `NULL`, `NUMERIC`, `STRING`, `RANGE`, `LIST_OF_NUMERIC` and `LIST_OF_STRING`.

The `ValueType` class also has an instance method named `validateValue` that takes an instance of type `ConditionValue` as method arguments and validate if the value matches the required type. The `validateValue` does not return any information but throws `NullPointerException` or `IllegalArgumentException` when the input value is null or does not match with indicated `valueType`.

ConditionAssessor Data Elements


The interface `ConditionAssessor` has one method, named `assess`. This method takes five parameters of type `AReq`, `AdditionalInfo`, `TxCallback`, `Condition` and `ConditionValue` and returns the assessment result as `AssessmentResult`. `ConditionValue` and `AdditionalInfo` are described in [ConditionValue Data Elements](#) and [AdditionalInfo Data Elements](#).

`AssessmentResult` is described in [AssessmentResult Data Elements](#).

TxCallback Data Elements

The `TxCallback` interface has callback mechanism so that ACS can provide proper historic transactions to the adapter. This interface has one method named `onPreviousTXRequiredByCountOrDays` that takes two integer arguments and returns a list of `AReqWithTransStatus` objects. The first parameter is the number of last transactions that should be returned and the second one is the number of days, which we should return the transactions occurred therein. The maximum transactions according to these parameter will be returned as result.

AssessmentResult Data Elements

- **Field Name:** `score`
 - **Description:** Risk assessment as a number
 - **Length:**
 - **Format:** Integer
 - **Accepted Value:** 0-100
 - **Message Inclusion:** Required
 - **Field Name:** `whatToDoNext`
 - **Description:** The behavior that should be done about the remained risk-chain assessments
 - **Length:**
 - **Format:** JSON object of `behaviour` .
 - **Accepted Value:** CONTINUE, FINISH
 - **Message Inclusion:** Required
 - **Field Name:**  `referenceData`
 - **Description:** Additional information about the risk assessment provided by the risk assessor
 - **Length:**
 - **Format:** String
 - **Accepted Value:**
 - **Message Inclusion:** Optional
-

RestfulRBAAdapterInfo Data Elements

- **Field Name:** `adapterInfo`
 - **Description:** Some information about `Risk Adapter`
 - **Length:**

- **Format:** JSON format of the `AdapterInfo` object, described in [AdapterInfo Data Elements](#)
 - **Accepted Value:**
 - **Message Inclusion:** Required
 - **Field Name:** `parameter`
 - **Description:** The `Parameter` used in the `Risk Adapter`
 - **Length:**
 - **Format:** JSON format of the `Parameter` object, described in [Parameter Data Elements](#)
 - **Accepted Value:**
 - **Message Inclusion:** Required
 - **Field Name:** `conditions`
 - **Description:** List of available conditions (`RemoteCondition`) in the current adapters
 - **Length:**
 - **Format:** List of `RemoteCondition` objects in JSON format, described in [RemoteCondition Data Elements](#)
 - **Accepted Value:**
 - **Message Inclusion:** Required
-

RemoteCondition Data Elements

In addition to the aforementioned `Condition` properties, `RemoteCondition` has two additional fields that may be necessary for historic data

- **Field Name:** `previousTx`
 - **Description:** Indicates the number of previous transactions required for risk assessment
 - **Length:**
 - **Format:** Integer
 - **Accepted Value:**
 - **Message Inclusion:** Optional

• **Field Name:** `previousTxInDays`

- **Description:** Indicates the number of days of previous transactions required for risk assessment
 - **Length:**
 - **Format:** Integer
 - **Accepted Value:**
 - **Message Inclusion:** Optional
-

RemoteAssessmentRequest Data Elements

• **Field Name:** `aReq`

- **Description:** The *AReq* message of the current transaction.
- **Length:**
- **Format:** JSON object of `AReq` type, described in [AReq Data Elements](#)
- **Accepted Value:**
- **Message Inclusion:** Required

• **Field Name:** `additionalInfo`

- **Description:** Some additional Info for risk assessment
- **Length:**
- **Format:** JSON object of `AdditionalInfo` type. `AdditionalInfo` is explained in [AdditionalInfo Data Elements](#) section.
- **Accepted Value:**
- **Message Inclusion:** Optional

• **Field Name:** `previousData`

- **Description:** The historic data required for risk assessment
- **Length:**
- **Format:** List of `AReqWithTransStatus` in JSON format. `AReqWithTransStatus` is explained in `AReqWithTransStatus` Data Elements section.
- **Accepted Value:**

- **Message Inclusion:** Optional
 - **Field Name:** `conditionName`
 - **Description:** Name of `Condition` to be processed
 - **Length:** 50 characters
 - **Format:** String
 - **Accepted Value:** Any
 - **Message Inclusion:** Required
 - **Field Name:** `conditionValue`
 - **Description:** Some settings for `Condition`, such as condition value, default behaviour and the output score
 - **Length:**
 - **Format:** JSON object of `ConditionValue` type, described in [ConditionValue Data Elements](#)
 - **Accepted Value:**
 - **Message Inclusion:** Required
-

ConditionValue Data Elements

ConditionValue has the following private instance variables and some methods to access them.

- **Field Name:** `condition`
 - **Description:** `Condition` that the condition value is assigned to
 - **Length:**
 - **Format:** JSON object of `Condition`, described in [Condition Data Elements](#)
 - **Accepted Value:**
 - **Message Inclusion:** Required
- **Field Name:** `numeric`
 - **Description:** The condition value passed to the `Risk Adapter` if, and only if, `ValueType` of `Condition` is `NUMERIC`
 - **Length:**

- **Format:** Number
- **Accepted Value:**
- **Message Inclusion:** Required
- **Field Name:** `range`
 - **Description:** The condition value to be passed to the `Risk Adapter` , only if `ValueType` of `Condition` is equal to `RANGE` type
 - **Length:**
 - **Format:** An object of `Range` class. `Range` is explained in [Range Data Elements](#)
 - **Accepted Value:**
 - **Message Inclusion:** Required
- **Field Name:** `string`
 - **Description:** The condition value to be passed to the `Risk Adapter` if, and only if, `ValueType` of `Condition` is `STRING`
 - **Length:**
 - **Format:**
 - **Accepted Value:**
 - **Message Inclusion:** Required
- **Field Name:** `listOfNumeric`
 - **Description:** The condition value to be passed to the `Risk Adapter` if, and only if, `ValueType` of `Condition` is `LIST_OF_NUMERIC`
 - **Length:**
 - **Format:**
 - **Accepted Value:**
 - **Message Inclusion:** Required
- **Field Name:** `listOfString`
 - **Description:** The condition value to be passed to the `Risk Adapter` if, and only if, `ValueType` of `Condition` is `LIST_OF_STRING`
 - **Length:**
 - **Format:**
 - **Accepted Value:**

- **Message Inclusion:** Required
- **Field Name:** `whenMatches`
 - **Description:** The default behaviour when the condition matches
 - **Length:**
 - **Format:** `behaviour`
 - **Accepted Value:** `CONTINUE` , `FINISH`
 - **Message Inclusion:** Required
- **Field Name:** `whenMismatch`
 - **Description:** The default behaviour when the condition mismatches
 - **Length:**
 - **Format:** `behaviour`
 - **Accepted Value:** `CONTINUE` , `FINISH`
 - **Message Inclusion:** Required
- **Field Name:** `scoreWhenMatches`
 - **Description:** The output score when the condition matches
 - **Length:**
 - **Format:** Integer
 - **Accepted Value:** 0-100
 - **Message Inclusion:** Required

Here is the methods that can be used in Native API Risk Adapter:

- `asNumeric(Condition condition, Number number)` is a static method that takes two arguments. The first one is an instance of `Condition` class and the second one is a value of type `Number` . By calling this method, a new object of `ConditionValue` class will be created and initialize the field for `number` . Then this new object will be assigned to the condition (first argument) and will be returned as method output.
- `asString(Condition condition, String value)` is a static method that takes two arguments. The first one is an instance of `Condition` class and the second one is a value of type `String` . By calling this method, a new object of `ConditionValue` class will be created and initialize the field for `string` . Then this new object will be assigned to the condition (first argument) and will be returned as method output.

- `asRange(Condition condition, Number start, Number end)` is a static method that takes three arguments. The first one is an instance of `Condition` class, the second one is a value of type `Number` as minimum value of a range and the third one is a value of type `Number` as maximum value of a range. By calling this method, a new object of `ConditionValue` class will be created and initialize the field for `range`. Then this new object will be assigned to the condition (first argument) and will be returned as method output.
- `asListOfNumeric(Condition condition, List<Number> value)` is a static method that takes two arguments. The first one is an instance of `Condition` class and the second one is a List of `Number`. By calling this method, a new object of `ConditionValue` class will be created and initialize the field for `listOfNumeric`. Then this new object will be assigned to the condition (first argument) and will be returned as method output.
- `asListOfString(Condition condition, List<String> value)` is a static method that takes two arguments. The first one is an instance of `Condition` class and the second one is a List of `String`. By calling this method, a new object of `ConditionValue` class will be created and initialize the field for `listOfString`. Then this new object will be assigned to the condition (first argument) and will be returned as method output.

Also there is getter and setter methods for retrieving and updating value of `ConditionValue` instance variables.

Range Data Elements

A class to represent ranges of values. A range is defined to contain all the values between the `start` and `end` values, where the start and end values are considered included in the range. This class has two instance variable of type `Number` that indicate minimum and maximum of the range.

- **Field Name:** `start`
 - **Description:** The minimum value of the range. This value included in the range.
 - **Length:**
 - **Format:** Number
 - **Accepted Value:**
 - **Message Inclusion:**

• **Field Name:** `end`

- **Description:** The maximum value of the range. This value included in the range.
- **Length:**
- **Format:** Number
- **Accepted Value:**
- **Message Inclusion:**

The `Range` class also has two methods:

- `valueOf` is a static method that takes two number as start and end of the range and returns an instance of `Range` class.
 - `inRange` is an instance method that takes a value and returns a boolean. This method checks whether the input value is in the specified range or not.
-

AReqWithTransStatus Data Elements

• **Field Name:** `aReq`

- **Description:** The AReq message of the transaction.
- **Length:**
- **Format:** JSON object of AReq type. `AReq` is explained in [AReq Data Elements](#) section.
- **Accepted Value:**
- **Message Inclusion:** Required

• **Field Name:** `transStatus`

- **Description:** Indicates whether a transaction qualifies as an authenticated transaction or account verification.
- **Length:** 1 character
- **Format:** String
- **Accepted Value:**
 - Y = Authentication/ Account Verification Successful
 - N = Not Authenticated/ Account Not Verified; Transaction denied

- U = Authentication/ Account Verification Could Not Be Performed; Technical or other problem, as indicated in ARes or RReq
- A = Attempts Processing Performed; Not Authenticated/Verified, but a proof of attempted authentication/verification is provided
- C = ChallengeRequired; Additional authentication is required using the CReq/CRes
- 🟡 D = ChallengeRequired; Decoupled Authentication confirmed.
- R = Authentication/Account Verification Rejected; Issuer is rejecting authentication/ verification and request that authorisation not be attempted.

○ **Message Inclusion:** Optional

• **Field Name:** `transStatusReason`

○ **Description:** Provides information on why the Transaction Status field has the specified value.

○ **Length:** 2 characters

○ **Format:** String

○ **Accepted Value:**

- 01 = Card authentication failed
- 02 = Unknown Device
- 03 = Unsupported Device
- 04 = Exceeds authentication frequency limit
- 05 = Expired card
- 06 = Invalid card number
- 07 = Invalid transaction
- 08 = No Card record
- 09 = Security failure
- 10 = Stolen card
- 11 = Suspected fraud
- 12 = Transaction not permitted to Cardholder
- 13 = Cardholder not enrolled in service
- 14 = Transaction timed out at the ACS
- 15 = Low confidence

- 16 = Medium confidence
- 17 = High confidence
- 18 = Very High confidence
- 19 = Exceeds ACS maximum challenges
- 20 = Non-Payment transaction not supported
- 21 = 3RI transaction not supported
- + 22 = ACS technical issue
- + 23 = Decoupled Authentication required by ACS but not requested by 3DS Requestor
- + 24 = 3DS Requestor Decoupled Max ExpiryTime exceeded
- + 25 = Decoupled Authentication was provided insufficient time to authenticate Cardholder. ACS will not make attempt
- + 26 = Authentication attempted but not performed by the Cardholder
- 27–79 = Reserved for EMVCo future use (values invalid until defined by EMVCo)
- 80–99 = Reserved for DS use

- **Message Inclusion:** Optional

- **Field Name:** challenge

- **Description:** A value of true indicates that the transaction flow is Challenge.
- **Length:**
- **Format:** Boolean
- **Accepted Value:** true, false
- **Message Inclusion:** Optional

- **Field Name:** challengeCancel

- **Description:** Indicator informing the ACS and the DS that the authentication has been cancelled.
- **Length:** 2 characters
- **Format:** String
- **Accepted Value:**
- 01 = No preference

- 02 = No challenge requested
- 03 = Challenge requested: 3DS Requestor Preference
- 04 = Challenge requested: Mandate
- 05–79 = Reserved for EMV future use (values invalid until defined by EMV 3DS)
- 80-99 = Reserved for DS use
- **Message Inclusion:** Optional
- **Field Name:** `errorCode`
 - **Description:** Code indicating the type of problem identified in the message.
 - **Length:** 3 characters
 - **Format:** String
 - **Accepted Value:**
 - **Message Inclusion:** Optional

AReq Data Elements

- **Field Name:** `threeDSCompInd`
 - **Description:** Indicates whether the 3DS Method was successfully completed
 - **Length:** 1 character
 - **Format:** String
 - **Accepted Value:**
 - Y = Successfully completed
 - N = Did not successfully complete
 - U = Unavailable
 - **Message Inclusion:** Optional
- **Field Name:** `threeDSRequestorAuthenticationInd`
 - **Description:** Indicates the type of authentication request. This data element provides additional information to the ACS to determine the best approach for handling the authentication request
 - **Length:** 2 characters
 - **Format:** String

- **Accepted Value:**
 - 01 = Cardholder selected “Cancel”
 - 02 = 3DS Requestor cancelled Authentication.
 - 03 = Transaction Abandoned
 - 04 = Transaction Timed Out at ACS— other timeouts
 - 05 = Transaction Timed Out at ACS—First CReq not received by ACS
 - 06 = Transaction Error
 - 07 = Unknown
 - 08–79 = Reserved for future EMVCo use(values invalid until defined by EMVCo)
 - 80-99 = Reserved for future DS use
- **Message Inclusion:** Optional
- **Field Name:** `threeDSRequestorAuthenticationInfo`
 - **Description:** Data that documents and supports a specific authentication process. In the current version of the specification, this data element is not defined in detail, however the intention is that for each 3DS requestor authentication method, this field will carry the data that the ACS will use to verify the authentication process, described in [threeDSRequestorAuthenticationInfo Data Elements](#)
 - **Length:** Variable
 - **Format:** Object
 - **Accepted Value:**
 - **Message Inclusion:** Optional
 - **Conditional Inclusion:** Optional but inclusion recommended
- **Field Name:** `threeDSRequestorChallengeInd`
 - **Description:** Indicates whether a challenge is to be requested for the transaction
 - **Length:** 2 characters
 - **Format:** String
 - **Accepted Value:**
 - 01 = No preference
 - 02 = No challenge requested
 - 03 = Challenge requested: 3DS Requestor Preference

- 04 = Challenge requested: Mandate
- 05–79 = Reserved for EMVCo future use (values invalid until defined by EMVCo)
- 80-99 = Reserved for DS use

- **Message Inclusion:** Optional

- **Field Name:** `threeDSRequestorID`

- **Description:** DS assigned 3DS Requestor identifier.
- **Length:** Variable, maximum 35 characters
- **Format:** String
- **Accepted Value:** Any individual DS may impose specific formatting and character requirements on the contents of this field
- **Message Inclusion:** Required

- **Field Name:** `threeDSRequestorName`

- **Description:** DS assigned 3DS Requestor name.
- **Length:** Variable, maximum 40 characters
- **Format:** String
- **Accepted Value:** Any individual DS may impose specific formatting and character requirements on the contents of this field
- **Message Inclusion:** Required

- **Field Name:** `threeDSRequestorPriorAuthenticationInfo`

- **Description:** Information about how the 3DS Requestor authenticated the Cardholder as part of a previous 3DS transaction, described in [threeDSRequestorPriorAuthenticationInfo Data Elements](#)
- **Length:** Variable
- **Format:** Object
- **Accepted Value:**
- **Message Inclusion:** Optional
- **Conditional Inclusion:** Optional but inclusion recommended

• **Field Name:** `threeDSRequestorURL`

- **Description:** Fully qualified URL of 3DS Requestor website or customer care site. This data element provides additional information to the receiving 3-D Secure system for when a problem arises, and should provide contact information.
- **Length:** Variable, maximum 2048 characters
- **Format:** String
- **Accepted Value:** Fully qualified URL
- **Message Inclusion:** Required

• **Field Name:** `threeDSRefNumber`

- **Description:** Unique identifier assigned by the EMVCo Secretariat upon testing and approval
- **Length:** Variable, maximum 32 characters
- **Format:** String
- **Accepted Value:** Set by the EMVCo Secretariat
- **Message Inclusion:** Required

• **Field Name:** `threeDSOperatorID`

- **Description:** DS assigned 3DS Server identifier. Each DS can provide a unique ID to each 3DS Server
- **Length:** Variable, maximum 32 characters
- **Format:** String
- **Accepted Value:** Any individual DS may impose specific formatting and character requirements on the contents of this field
- **Message Inclusion:** Conditional
- **Conditional Inclusion:** Requirements for the presence of this field are DS specific

• **Field Name:** `threeDSTransID`

- **Description:** Universally unique transaction identifier assigned by the 3DS Server to identify a single transaction
- **Length:** 36 characters
- **Format:** String

- **Accepted Value:** Canonical format as defined in IETF RFC 4122. May utilise any of the specified versions if the output meets specified requirements
- **Message Inclusion:** Required
- **Field Name:** `threeDSServerURL`
 - **Description:** Fully qualified URL of the 3DS Server to which the DS will send the RReq message after the challenge has completed. Incorrect formatting will result in a failure to deliver the transaction results via the RReq message.
 - **Length:** Variable, maximum 2048 characters
 - **Format:** String
 - **Accepted Value:** Fully qualified URL
 - **Message Inclusion:** Required
- **Field Name:** `threeRIInd`
 - **Description:** Indicates the type of 3RI request. This data element provides additional information to the ACS to determine the best approach for handling the 3RI request
 - **Length:** 2 characters
 - **Format:** String
 - **Accepted Value:**
 - 01 = Recurring transaction
 - 02 = Instalment transaction
 - 03 = Add card
 - 04 = Maintain card information
 - 05 = Account verification
 - 06–79 = Reserved for EMVCo future use (values invalid until defined by EMVCo)
 - 80-99 = Reserved for DS use
 - **Message Inclusion:** Required
- **Field Name:** `acctType`
 - **Description:** Indicates the type of account. For example, for a multi-account card product
 - **Length:** 2 characters
 - **Format:** String


- **Accepted Value:**
 - 01 = Not Applicable
 - 02 = Credit
 - 03 = Debit
- **Message Inclusion:** Conditional
- **Conditional Inclusion:** Required if 3DS Requestor is asking Cardholder which Account Type they are using before making the purchase Required in some markets (for example, for Merchants in Brazil). Otherwise, it is optional.
- **Field Name:** `acquirerBIN`
 - **Description:** Acquiring institution identification code as assigned by the DS receiving the AReq message
 - **Length:** Variable, maximum 11 characters
 - **Format:** String
 - **Accepted Value:** This value correlates to the Acquirer BIN as defined by each Payment System or DS.
 - **Message Inclusion:** 01-PA: Required, 02-NPA: Optional
- **Field Name:** `acquirerMerchantID`
 - **Description:** Acquirer-assigned Merchant identifier. This may be the same value that is used in authorisation requests sent on behalf of the 3DS Requestor and is represented in ISO 8583 formatting requirements
 - **Length:** Variable, maximum 35 characters
 - **Format:** String
 - **Accepted Value:** Individual DS may impose specific formatting and character requirements on the contents of this field
 - **Message Inclusion:** 01-PA: Required, 02-NPA: Optional
- **Field Name:** `addrMatch`
 - **Description:** Indicates whether the Cardholder Shipping Address and Cardholder Billing Address are the same
 - **Length:** 1 characters
 - **Format:** String

- **Accepted Value:**
 - Y = Shipping Address matches Billing Address
 - N = Shipping Address does not match Billing Address
- **Message Inclusion:** Optional
- **Field Name:** `broadInfo`
 - **Description:** Unstructured information sent between the 3DS Server, the DS and the ACS
 - **Length:** 4096
 - **Format:** String (JSON object)
 - **Accepted Value:**
 - **Message Inclusion:** Conditional
 - **Conditional Inclusion:** Requirements for the presence of this field are DS specific
- **Field Name:** `browserAcceptHeader`
 - **Description:** Exact content of the HTTP accept headers as sent to the 3DS Requestor from the Cardholder's browser
 - **Length:** Variable, maximum 2048 characters
 - **Format:** String
 - **Accepted Value:** If the total length of the accept header sent by the browser exceeds 2048 characters, the 3DS Server truncates the excess portion
 - **Message Inclusion:** Required
- **Field Name:** `browserIP`
 - **Description:** IP address of the browser as returned by the HTTP headers to the 3DS Requestor
 - **Length:** Variable, maximum 45 characters
 - **Format:** String
 - **Accepted Value:**
 - IPv4 address is represented in the decimal format of 4 sets of decimal numbers separated by dots. The decimal number in each and every set is in the range 0 to 255. Example IPv4 address: 1.12.123.255

- IPv6 address is represented as eight groups of four hexadecimal digits, each group representing 16 bits (two octets). The groups are separated by colons (:). Example IPv6 address: 2011:0db8:85 a3:0101:0101:8a2e:03 70:7334

- **Message Inclusion:** Conditional
- **Conditional Inclusion:** Include this field where regionally acceptable.

• **Field Name:** `browserJavaEnabled`

- **Description:** Boolean that represents the ability of the Cardholder browser to execute Java. Value is returned from the navigator.javaEnabled property.
- **Length:**
- **Format:** Boolean
- **Accepted Value:** true, false
-  **Message Inclusion:** Conditional
- **Conditional Inclusion:** Required when `Browser JavaScript Enabled = true``, otherwise Optional.

• **Field Name:** `browserLanguage`

- **Description:** Value representing the browser language as defined in IETF BCP47. Returned from navigator.language property
- **Length:** Variable, 1-8 characters
- **Format:** String
- **Accepted Value:**
- **Message Inclusion:** Required

• **Field Name:** `browserColorDepth`

- **Description:** Value representing the bit depth of the colour palette for displaying images, in bits per pixel. Obtained from the Cardholder's browser using the screen.colorDepth property.
- **Length:** Variable, 1-2 characters
- **Format:** String
- **Accepted Value:**
 - 1 = 1 bit
 - 4 = 4 bits

- 8 = 8 bits
- 15 = 15 bits
- 16 = 16 bits
- 24 = 24 bits
- 32 = 32 bits
- 48 = 48 bits

- **Message Inclusion:** Required

- **Field Name:** `browserScreenHeight`

- **Description:** Total height of the Cardholder's screen in pixels. Value is returned from the `screen.height` property
- **Length:** Variable, 1-6 characters
- **Format:** String
- **Accepted Value:**
- **Message Inclusion:** Required

- **Field Name:** `browserScreenWidth`

- **Description:** Total width of the Cardholder's screen in pixels. Value is returned from the `screen.width` property
- **Length:** Variable, 1-6 characters
- **Format:** String
- **Accepted Value:**
- **Message Inclusion:** Required

- **Field Name:** `browserTZ`

- **Description:** Time difference between UTC time and the Cardholder's browser local time, in minutes
- **Length:** Variable, 1-5 characters
- **Format:** String
- **Accepted Value:** Value is returned from the `getTimezoneOffset()` method
- **Message Inclusion:** Required

• Field Name: `browserUserAgent`

- **Description:** Exact content of the HTTP user-agent header
- **Length:** Variable, maximum 2048 characters
- **Format:** String
- **Accepted Value:** If the total length of the User-Agent sent by the browser exceeds 2048 characters, the 3DS Server truncates the excess portion
- **Message Inclusion:** Required

• Field Name: `cardExpiryDate`

- **Description:** Expiry date of the PAN or token supplied to the 3DS Requestor by the Cardholder
- **Length:** 4 characters
- **Format:** String (accepted format: YYMM)
- **Accepted Value:**
- **Message Inclusion:** Conditional
- **Conditional Inclusion:** The requirements for the presence of this field are DS specific

• Field Name: `acctInfo`

- **Description:** Additional information about the Cardholder's account provided by the 3DS Requestor, described in [acctInfo Data Elements](#)
- **Length:** Variable
- **Format:** Object
- **Accepted Value:**
- **Message Inclusion:** Optional

• Field Name: `acctNumber`

- **Description:** Account number that will be used in the authorisation request for payment transactions. May be represented by PAN, token.
- **Length:** Variable, 13-19 characters, or up to 72 characters when encryption for sensitive data is enabled
- **Format:** String
- **Accepted Value:** Format represented in ISO 7812.
- **Message Inclusion:** Required

Field Name: acctID

- **Description:** Additional information about the account optionally provided by the 3DS Requestor
- **Length:** Variable, maximum 64 characters
- **Format:** String
- **Accepted Value:**
- **Message Inclusion:** Optional

Field Name: billAddrCity

- **Description:** The city of the Cardholder billing address associated with the card used for this transaction
- **Length:** Variable, maximum 50 characters
- **Format:** String
- **Accepted Value:**
- **Message Inclusion:** Conditional
- **Conditional Inclusion:** 01-PA: Required unless market or regional mandate restricts sending this information, 02-NPA: Required (if available) unless market or regional mandate restricts sending this information.

Field Name: billAddrCountry

- **Description:** The country of the Cardholder billing address associated with the card used for this transaction
- **Length:** 3 characters
- **Format:** String
- **Accepted Value:** ISO 3166-1 numeric three-digit country code, other than exceptions listed in Table A.5 Excluded Currency Code and Country Code Values.
- **Message Inclusion:** Conditional
- **Conditional Inclusion:** Required if Cardholder billing address state is present. 01-PA: Required unless market or regional mandate restricts sending this information. 02-NPA: Required (if available) unless market or regional mandate restricts sending this information.

• **Field Name:** `billAddrLine1`

- **Description:** First line of the street address or equivalent local portion of the Cardholder billing address associated with the card used for this transaction
- **Length:** Variable, maximum 50 characters
- **Format:** String
- **Accepted Value:**
- **Message Inclusion:** Conditional
- **Conditional Inclusion:** 01-PA: Required unless market or regional mandate restricts sending this information, 02-NPA: Required (if available) unless market or regional mandate restricts sending this information.

• **Field Name:** `billAddrLine2`

- **Description:** Second line of the street address or equivalent local portion of the Cardholder billing address associated with the card used for this transaction
- **Length:** Variable, maximum 50 characters
- **Format:** String
- **Accepted Value:**
- **Message Inclusion:** Conditional
- **Conditional Inclusion:** 01-PA: Required unless market or regional mandate restricts sending this information, 02-NPA: Required (if available) unless market or regional mandate restricts sending this information.

• **Field Name:** `billAddrLine3`

- **Description:** Third line of the street address or equivalent local portion of the Cardholder billing address associated with the card used for this transaction
- **Length:** Variable, maximum 50 characters
- **Format:** String
- **Accepted Value:**
- **Message Inclusion:** Conditional
- **Conditional Inclusion:** 01-PA: Required unless market or regional mandate restricts sending this information, 02-NPA: Required (if available) unless market or regional mandate restricts sending this information.

• **Field Name:** `billAddrPostCode`

- **Description:** ZIP or other postal code of the Cardholder billing address associated with the card used for this transaction
- **Length:** Variable, maximum 16 characters
- **Format:** String
- **Accepted Value:**
- **Message Inclusion:** Conditional
- **Conditional Inclusion:** 01-PA: Required unless market or regional mandate restricts sending this information, 02-NPA: Required (if available) unless market or regional mandate restricts sending this information.

• **Field Name:** `billAddrState`

- **Description:** The state or province of the Cardholder billing address associated with the card used for this transaction
- **Length:** Variable, maximum 16 characters
- **Format:** String
- **Accepted Value:** Country subdivision code defined in ISO 3166-2
- **Message Inclusion:** Conditional
- **Conditional Inclusion:** 01-PA: Required unless market or regional mandate restricts sending this information, or state is not applicable for this country. 02-NPA: Required (if available) unless market or regional mandate restricts sending this information, or State is not applicable for this country.

• **Field Name:** `email`

- **Description:** The email address associated with the account that is either entered by the Cardholder or is on file with the 3DS Requestor
- **Length:** Variable, maximum 254 characters
- **Format:** String
- **Accepted Value:** To meet the requirements of Section 3.4 of IETF RFC 5322.
- **Message Inclusion:** Conditional
- **Conditional Inclusion:** Required unless market or regional mandate restricts sending this information

Field Name: `homePhone`

- **Description:** The home phone number provided by the Cardholder, described in [homePhone Data Elements](#)
- **Message Inclusion:** Conditional
- **Conditional Inclusion:** Required unless market or regional mandate restricts sending this information

Field Name: `mobilePhone`

- **Description:** The mobile phone number provided by the Cardholder, described in [mobilePhone Data Elements](#)
- **Message Inclusion:** Conditional
- **Conditional Inclusion:** Required unless market or regional mandate restricts sending this information

Field Name: `CardholderName`

- **Description:** Name of the Cardholder
- **Length:** Variable, 2-45 characters, or up to 72 characters when encryption for sensitive data is enabled
- **Format:** String
- **Accepted Value:** Alphanumeric special characters, listed in EMV Book 4, "Appendix B".
- **Message Inclusion:** Conditional
- **Conditional Inclusion:** Required unless market or regional mandate restricts sending this information

Field Name: `shipAddrCity`

- **Description:** City portion of the shipping address requested by the Cardholder
- **Length:** Variable, maximum 50 characters
- **Format:** String
- **Accepted Value:**
- **Message Inclusion:** Conditional
- **Conditional Inclusion:** Required unless market or regional mandate restricts sending this information

• **Field Name:** `shipAddrCountry`

- **Description:** Country of the shipping address requested by the Cardholder
- **Length:** 3 characters
- **Format:** String
- **Accepted Value:** ISO 3166-1 three-digit country code
- **Message Inclusion:** Conditional
- **Conditional Inclusion:** Required if Cardholder shipping address state is present. Required, if available, unless market or regional mandate restricts sending this information.

• **Field Name:** `shipAddrLine1`

- **Description:** First line of the street address or equivalent local portion of the shipping address requested by the Cardholder
- **Length:** Variable, maximum 50 characters
- **Format:** String
- **Accepted Value:**
- **Message Inclusion:** Conditional
- **Conditional Inclusion:** Required unless market or regional mandate restricts sending this information

• **Field Name:** `shipAddrLine2`

- **Description:** Second line of the street address or equivalent local portion of the shipping address requested by the Cardholder
- **Length:** Variable, maximum 50 characters
- **Format:** String
- **Accepted Value:**
- **Message Inclusion:** Conditional
- **Conditional Inclusion:** Required unless market or regional mandate restricts sending this information

• **Field Name:** `shipAddrLine3`

- **Description:** Third line of the street address or equivalent local portion of the shipping address requested by the Cardholder

- **Length:** Variable, maximum 50 characters
- **Format:** String
- **Accepted Value:**
- **Message Inclusion:** Conditional
- **Conditional Inclusion:** Required unless market or regional mandate restricts sending this information
- **Field Name:** `shipAddrPostCode`
 - **Description:** The ZIP or other postal code of the shipping address requested by the Cardholder
 - **Length:** Variable, maximum 16 characters
 - **Format:** String
 - **Accepted Value:**
 - **Message Inclusion:** Conditional
 - **Conditional Inclusion:** Required unless market or regional mandate restricts sending this information
- **Field Name:** `shipAddrState`
 - **Description:** The state or province of the shipping address associated with the card being used for this transaction
 - **Length:** Variable, maximum 3 characters
 - **Format:** String
 - **Accepted Value:** Country subdivision code defined in ISO 3166-2
 - **Message Inclusion:** Conditional
 - **Conditional Inclusion:** Required, if available, unless market or regional mandate restricts sending this information or state is not applicable for this country.
- **Field Name:** `workPhone`
 - **Description:** The work phone number provided by the Cardholder. Described in [workPhone Data Elements](#)
 - **Message Inclusion:** Conditional
 - **Conditional Inclusion:** Required unless market or regional mandate restricts sending this information

Field Name: `deviceChannel`

- **Description:** Indicates the type of channel interface being used to initiate the transaction
- **Length:** 2 characters
- **Format:** String
- **Accepted Value:**
 - 01 = App-based (APP)
 - 02 = Browser (BRW)
 - 03 = 3DS Requestor Initiated (3RI)
 - 04–79 = Reserved for EMVCo future use (values invalid until defined by EMVCo)
 - 80–99 = Reserved for DS use
- **Message Inclusion:** Required

Field Name: `deviceInfo`

- **Description:** Device information gathered by the 3DS SDK from a consumer device as Base64url encoded JSON name/value pairs. This will be obtained from the SDK as encrypted data and populated by the DS, as unencrypted data, to the ACS.
- **Length:** Variable, maximum 64000 characters
- **Format:** Object
- **Accepted Value:** Base64url encoded JSON object
- **Message Inclusion:** Conditional
- **Conditional Inclusion:** Required between the DS and ACS but will not be present from 3DS Server to DS

Field Name: `deviceRenderOptions`

- **Description:** Defines the SDK UI types that the device supports for displaying specific challenge user interfaces within the SDK, described in [deviceRenderOptions Data Elements](#)
- **Length:** Variable, maximum 64000 characters
- **Format:** JSON object
- **Message Inclusion:** Required

Field Name: `dsReferenceNumber`

- **Description:** EMVCo assigned unique identifier to track approved DS

- **Length:** Variable, maximum 32 characters
- **Format:** String
- **Accepted Value:**
- **Message Inclusion:** Conditional
- **Conditional Inclusion:** The DS will populate the AReq with this data element prior to passing it to the ACS
- **Field Name:** `dsTransID`
 - **Description:** Universally unique transaction identifier assigned by the DS to identify a single transaction
 - **Length:** 36 characters
 - **Format:** String
 - **Accepted Value:** Canonical format as defined in IETF RFC 4122. May utilise any of the specified versions as long as the output meets specified requirements
 - **Message Inclusion:** Conditional
 - **Conditional Inclusion:** The DS will populate the AReq with this data element prior to passing to the ACS. Required in error messages if available (e.g. can be obtained from a message or is generated).
- **Field Name:** `dsURL`
 - **Description:** URL of the DS to which the ACS will send the RReq if a challenge occurs. The ACS is responsible for storing this value for later use in the transaction for sending the RReq to the DS.
 - **Length:** Variable, maximum 2048 characters
 - **Format:** String
 - **Accepted Value:**
 - **Message Inclusion:** Conditional
 - **Conditional Inclusion:** Required between the DS and ACS but will not be present between the 3DS Server and DS
- **Field Name:** `payTokenInd`
 - **Description:** A value of `true` indicates that the transaction was detokenised prior to being received by the ACS. This data element will be populated by the system residing in the 3-D Secure domain where the detokenisation occurs (i.e. the 3DS Server or the DS).

Note: The Boolean value of `true` is the only valid response for this field when it is present.

- **Length:**
- **Format:** Boolean
- **Accepted Value:** true
- **Message Inclusion:** Conditional
- **Conditional Inclusion:** Required if there is detokenisation of an account number
- **Field Name:** `purchaseInstalData`
 - **Description:** Indicates the maximum number of authorisations permitted for instalment payments
 - **Length:** Variable, maximum 3 characters
 - **Format:** String
 - **Accepted Value:** Value greater than 1
 - **Message Inclusion:** Conditional
 - **Conditional Inclusion:** Required if the merchant and Cardholder have agreed to instalment payments, i.e. if 3DS Requestor Authentication Indicator = 03. Omitted if not an instalment payment authentication.
- **Field Name:** `mcc`
 - **Description:** DS specific code describing the merchant's type of business, product or service
 - **Length:** 4 characters
 - **Format:** String
 - **Accepted Value:** This value correlates to the merchant category code as defined by each payment system or DS
 - **Message Inclusion:** 1-PA: Required, 02-NPA: Optional
- **Field Name:** `merchantCountryCode`
 - **Description:** Country code of the merchant. This value correlates to the merchant country code as defined by each payment system or DS
 - **Length:** 3 characters
 - **Format:** String

- **Accepted Value:** ISO 3166-1 numeric three-digit country code. The same value must be used in the authorisation request.
- **Message Inclusion:** 1-PA: Required, 02-NPA: Optional
- **Field Name:** `merchantName`
 - **Description:** Merchant name assigned by the acquirer or payment system
 - **Length:** Variable, maximum 40 characters
 - **Format:** String
 - **Accepted Value:** Same name used in the authorisation message as defined in ISO 8583
 - **Message Inclusion:** 1-PA: Required, 02-NPA: Optional
- **Field Name:** `merchantRiskIndicator`
 - **Description:** Merchant's assessment of the level of fraud risk for the specific authentication for both the Cardholder and the authentication being conducted, described in [merchantRiskIndicator Data Elements](#)
 - **Length:** Variable
 - **Format:** Object
 - **Accepted Value:** Data will be formatted into a JSON object prior to being placed into the device merchant risk indicator field of the message.
 - **Message Inclusion:** Optional
- **Field Name:** `messageCategory`
 - **Description:** Identifies the category of the message for a specific use case
 - **Length:** 2 characters
 - **Format:** String
 - **Accepted Value:**
 - 01-PA
 - 02-NPA
 - **Message Inclusion:** Required
- **Field Name:** `messageExtension`
 - **Description:** Data necessary to support requirements not otherwise defined in the 3-D Secure message are carried in a message extension, described in [messageExtension Data Elements](#)

- **Length:** Variable, maximum 81920 bytes
- **Format:** Array
- **Accepted Value:**
- **Message Inclusion:** Conditional
- **Conditional Inclusion:** Conditions to be set by each DS.
- **Field Name:** `messageVersion`
 - **Description:** Protocol version identifier. This is version of the protocol specification utilised by the system creating this message. The message version number is set by the protocol version of the 3DS Server from which AReq message originates. The message version number does not change during a 3DS transaction.
 - **Length:** Variable, 5-8 characters
 - **Format:** String
 - **Accepted Value:**
 - 2.0.0 (deprecated)
 - 2.1.0 (active)
 - **Message Inclusion:** Required
- **Field Name:** `notificationURL`
 - **Description:** Fully qualified URL of the system that receives the CRes message or error message. The CRes message is posted by the ACS through the Cardholder browser at the end of the challenge and on receipt of the RRes message.
 - **Length:** Variable, maximum 256 characters
 - **Format:** String
 - **Accepted Value:** Fully qualified URL
 - **Message Inclusion:** Required
- **Field Name:** `purchaseAmount`
 - **Description:** Purchase amount in minor units of currency with all punctuation removed. When used in conjunction with the purchase currency exponent field, proper punctuation can be calculated.
 - **Length:** Variable, 48 characters
 - **Format:** String

- **Accepted Value:** Example: If the purchase amount is USD 123.45, element will contain the value 12345
- **Message Inclusion:** 1-PA: Required, 02-NPA: Conditional
- **Conditional Inclusion:** Required for 02-NPA if 3DS Requestor Authentication Indicator = 02 or 03
- **Field Name:** `purchaseCurrency`
 - **Description:** Currency in which the purchase amount is expressed.
 - **Length:** 3 characters
 - **Format:** String
 - **Accepted Value:** ISO 4217 three-digit currency code
 - **Message Inclusion:** 1-PA: Required, 02-NPA: Conditional
 - **Conditional Inclusion:** Required for 02-NPA if 3DS Requestor Authentication Indicator = 02 or 03
- **Field Name:** `purchaseExponent`
 - **Description:** Minor units of currency as specified in the ISO 4217 currency exponent
 - **Length:** 1 character
 - **Format:** String
 - **Accepted Value:**
 - **Message Inclusion:** 1-PA: Required, 02-NPA: Conditional
 - **Conditional Inclusion:** Required for 02-NPA if 3DS Requestor Authentication Indicator = 02 or 03
- **Field Name:** `purchaseDate`
 - **Description:** Date and time of the purchase, expressed in UTC.
 - **Length:** 14 characters
 - **Format:** String (Date Format: YYYYMMDDHHMMSS)
 - **Accepted Value:**
 - **Message Inclusion:** 1-PA: Required, 02-NPA: Conditional
 - **Conditional Inclusion:** Required for 02-NPA if 3DS Requestor Authentication Indicator = 02 or 03

• **Field Name:** `recurringExpiry`

- **Description:** Date after which no further authorisations shall be performed
- **Length:** 8 characters
- **Format:** String (Date Format: YYYYMMDDHH)
- **Accepted Value:**
- **Message Inclusion:** 1-PA: Conditional, 02-NPA: Conditional
- **Conditional Inclusion:** Required if 3DS Requestor Authentication Indicator = 02 or 03

• **Field Name:** `recurringFrequency`

- **Description:** Indicates the minimum number of days between authorisations.
- **Length:** Variable, 4 characters
- **Format:** String
- **Accepted Value:**
- **Message Inclusion:** 1-PA: Conditional, 02-NPA: Conditional
- **Conditional Inclusion:** Required if 3DS Requestor Authentication Indicator = 02 or 03

• **Field Name:** `sdkAppID`

- **Description:** Universally unique ID created upon all installations and updates of the 3DS Requestor App on a Consumer Device. This will be newly generated and stored by the 3DS SDK for each installation or update
- **Length:** 36 characters
- **Format:** String
- **Accepted Value:** Canonical format as defined in IETF RFC 4122. This may utilise any of the specified versions as long as the output meets specified requirements.
- **Message Inclusion:** Required

• **Field Name:** `sdkEphemPubKey`

- **Description:** Public key component of the ephemeral key pair generated by the 3DS SDK and used to establish session keys between the 3DS SDK and ACS
- **Length:** Variable, 256 characters
- **Format:** Object, JWK
- **Accepted Value:**
- **Message Inclusion:** Required

Field Name: `sdkMaxTimeout`

- **Description:** Indicates the maximum amount of time, in minutes, for all exchanges.
- **Length:** 2 characters
- **Format:** String
- **Accepted Value:** Greater than or = 5
- **Message Inclusion:** Required

Field Name: `sdkReferenceNumber`

- **Description:** Identifies the vendor and version for the 3DS SDK that is integrated in a 3DS Requestor App, assigned by EMVCo when the 3DS SDK is approved
- **Length:** Variable, 32 characters
- **Format:** String
- **Accepted Value:**
- **Message Inclusion:** Required

Field Name: `sdkTransID`

- **Description:** Universally unique transaction identifier assigned by the 3DS SDK to identify a single transaction.
- **Length:** 36 characters
- **Format:** String
- **Accepted Value:** Canonical format as defined in IETF RFC 4122. This may utilise any of the specified versions as long as the output meets specified requirements
- **Message Inclusion:** Required

Field Name: `transType`

- **Description:** Identifies the type of transaction being authenticated.
- **Length:** 2 characters
- **Format:** String
- **Accepted Value:**
 - 01 = Goods/ Service Purchase
 - 03 = Check Acceptance
 - 10 = Account Funding

- 11 = Quasi-Cash Transaction
- 28 = Prepaid Activation and Load. Note: Values derived from the 8583 ISO Standard.
- **Message Inclusion:** Conditional
- **Conditional Inclusion:** This field is required in some markets (e.g. for merchants in Brazil), otherwise, optional
- **+** **Field Name:** `threeDSReqAuthMethodInd`
 - **Description:** Value that represents the signature verification performed by the DS on the mechanism (e.g., FIDO) used by the cardholder to authenticate to the 3DS Requestor.
 - **Length:** 2 characters
 - **Format:** String
 - **Accepted Value:**
 - 01 = Verified
 - 02 = Failed
 - 03 = Not Performed
 - 04–79 = Reserved for EMVCo future use (values invalid until defined by EMVCo)
 - 80–99 = Reserved for DS use
 - **Message Inclusion:** Conditional
 - **Conditional Inclusion:** Conditional based on DS rules.
- **+** **Field Name:** `threeDSRequestorDecMaxTime`
 - **Description:** Indicates the maximum amount of time that the 3DS Requestor will wait for an ACS to provide the results of a Decoupled Authentication transaction (in minutes).
 - **Length:** 5 characters
 - **Format:** String
 - **Accepted Value:** Numeric values between 1 and 10080 accepted.
 - **Message Inclusion:** Conditional
 - **Conditional Inclusion:** Required if `3DS Requestor Decoupled Request Indicator = Y`.
- **+** **Field Name:** `threeDSRequestorDecReqInd`
 - **Description:** Indicates whether the 3DS Requestor requests the ACS to utilise Decoupled Authentication and agrees to utilise Decoupled Authentication if the ACS confirms its use.

- **Length:** 2 characters
- **Format:** String
- **Accepted Value:**
 - Y = Decoupled Authentication is supported and preferred if the challenge is necessary
 - N = Do not use Decoupled Authentication.
 - Note: if the element is not provided, the expected action is for the ACS to interpret it as N, do not use Decoupled Authentication.
- **Message Inclusion:** Optional
- **+ Field Name:** `browserJavascriptEnabled`
 - **Description:** Boolean that represents the ability of the cardholder browser to execute JavaScript.
 - **Length:**
 - **Format:** Boolean
 - **Accepted Value:** true, false
 - **Message Inclusion:** Conditional
- **+ Field Name:** `payTokenSource`
 - **Description:** This data element will be populated by the system residing in the 3-D Secure domain where the de-tokenisation occurs.
 - **Length:** 2 characters
 - **Format:** String
 - **Accepted Value:**
 - 01 = 3DS Server
 - 02 = DS
 - 03-79 = Reserved for EMVCo future use (values invalid until defined by EMVCo)
 - 80-99 = Reserved for DS use.
 - **Message Inclusion:** Conditional
 - **Conditional Inclusion:** Required if EMV Payment Token Indicator = true

- **Field Name:** `whiteListStatus`

- **Description:** Enables the communication of trusted beneficiary/whitelist status between the ACS, the DS, and the 3DS Requestor.
- **Length:** 1 characters
- **Format:** String
- **Accepted Value:**
 - Y = 3DS Requestor is whitelisted by the cardholder
 - N = 3DS Requestor is not whitelisted by the cardholder.
- **Message Inclusion:** Optional

- **Field Name:** `whiteListStatusSource`

- **Description:** This data element will be populated by the system setting Whitelist Status.
- **Length:** 2 characters
- **Format:** String
- **Accepted Value:**
 - 01 = 3DS Server
 - 02 = DS
 - 03 = ACS
 - 04-79 = Reserved for EMVCo future use (values invalid until defined by EMVCo)
 - 80-99 = Reserved for DS use
- **Message Inclusion:** Conditional
- **Conditional Inclusion:** Required if Whitelist Status is present.

threeDSRequestorAuthenticationInfo Data Elements

- **Field Name:** `threeDSReqAuthData`

- **Description:** Data that documents and supports a specific authentication process. In the current version of the specification, this data element is not defined in detail, however the intention is that for each 3DS requestor authentication method, this field will carry the data for the ACS to use to verify the authentication process. For example, for method: 02—field can carry generic 3DS Requestor authentication information 03—data

element can carry information about the provider of the federated ID and related information 04—data element can carry the FIDO attestation data (including the signature) In future versions of the specification, these details are expected to be included

- **Length:** Variable, maximum 2048 bytes
- **Format:** String
- **Accepted Value:** Any
- **Message Inclusion:**

• **Field Name:** `threeDSReqAuthMethod`

- **Description:** Mechanism used by the Cardholder to authenticate to the 3DS Requestor

- **Length:** 2 characters

- **Format:** String

- **Accepted Value:**

- 01 = No 3DS Requestor authentication occurred (i.e. Cardholder “logged in as guest”)
- 02 = Login to the Cardholder account at the 3DS Requestor system using 3DS Requestor’s own credentials
- 03 = Login to the Cardholder account at the 3DS Requestor system using a federated ID
- 04 = Login to the Cardholder account at the 3DS Requestor system using issuer credentials
- 05 = Login to the Cardholder account at the 3DS Requestor system using third-party authentication
- 06 = Login to the Cardholder account at the 3DS Requestor system using a FIDO Authenticator
- 07–79 = Reserved for EMVCo future use (values invalid until defined by EMVCo)
- 80–99 = Reserved for DS use

• **Field Name:** `threeDSReqAuthTimestamp`

- **Description:** Date and time in UTC of the Cardholder authentication

- **Length:** 12 characters

- **Format:** String (Date Format: YYYYMMDDHHMM)

- **Accepted Value:**

threeDSRequestorPriorAuthenticationInfo Data Elements

- **Field Name:** `threeDSReqPriorAuthData`

- **Description:** Data that documents and supports a specific authentication process. In the current version of the specification this data element is not defined in detail, however the intention is that for each 3DS requestor authentication method, this field carry data that the ACS can use to verify the authentication process. In future versions of the specification, these details are expected to be included.
- **Length:** Maximum 2048 bytes
- **Format:** Any
- **Accepted Value:**

- **Field Name:** `threeDSReqPriorAuthMethod`

- **Description:** Mechanism used by the Cardholder to previously authenticate to the 3DS Requestor
- **Length:** 2 characters
- **Format:** String
- **Accepted Value:**
 - 01 = Frictionless authentication by ACS
 - 02 = Cardholder challenge by ACS
 - 03 = AVS verified 04 = Other issuer methods
 - 05–79 = Reserved for EMVCo future use (values invalid until defined by EMVCo)
 - 80–99 = Reserved for DS use

- **Field Name:** `threeDSReqPriorAuthTimestamp`

- **Description:** Date and time in UTC of the prior Cardholder authentication
- **Length:** 12 characters
- **Format:** String (Date Format: YYYYMMDDHHMM)
- **Accepted Value:**

Field Name: `threeDSReqPriorRef`

- **Description:** This data element provides additional information to the ACS to determine the best approach for handling a request
- **Length:** 36 characters
- **Format:** String
- **Accepted Value:** This data element contains an ACS transaction ID for a prior authenticated transaction (for example, the first recurring transaction that was authenticated with the Cardholder)

acctInfo Data Elements**Field Name:** `chAccAgeInd`

- **Description:** Length of time that the Cardholder has had the account with the 3DS Requestor
- **Length:** 2 characters
- **Format:** String
- **Accepted Value:**
 - 01 = No account (guest check-out)
 - 02 = Created during this transaction
 - 03 = Less than 30 days
 - 04 = 30-60 days
 - 05 = More than 60 days

Field Name: `chAccChange`

- **Description:** Date that the Cardholder's account information with the 3DS Requestor was last changed. Information includes billing or shipping address, new payment account, or new user/s added
- **Length:** 8 characters
- **Format:** String (Date Format: YYYYMMDD)
- **Accepted Value:**

• **Field Name:** `chAccChangeInd`

- **Description:** Length of time since the Cardholder's account information with the 3DS Requestor was last changed. Information includes billing or shipping address, new payment account, or new user/s added.
- **Length:** 2 characters
- **Format:** String
- **Accepted Value:**
 - 01 = Changed during this transaction
 - 02 = Less than 30 days
 - 03 = 30–60 days
 - 04 = More than 60 days

• **Field Name:** `chAccDate`

- **Description:** Date that the Cardholder opened the account with the 3DS Requestor
- **Length:** 8 characters
- **Format:** String (Date Format: YYYYMMDD)
- **Accepted Value:**

• **Field Name:** `chAccPwChange`

- **Description:** Date that Cardholder's account with the 3DS Requestor had a password change or account reset
- **Length:** 8 characters
- **Format:** String (Date Format: YYYYMMDD)
- **Accepted Value:**

• **Field Name:** `chAccPwChangeInd`

- **Description:** Indicates the length of time since the Cardholder's account with the 3DS Requestor had a password change or account reset
- **Length:** 2 characters
- **Format:** String
- **Accepted Value:**
 - 01 = No change
 - 02 = Changed during this transaction

- 03 = Less than 30 days
- 04 = 30–60 days
- 05 = More than 60 days

• **Field Name:** `nbPurchaseAccount`

- **Description:** Number of purchases using this Cardholder account during the last six months
- **Length:** Maximum 4 characters
- **Format:** String
- **Accepted Value:**

• **Field Name:** `provisionAttemptsDay`

- **Description:** Number of attempts made to add a card in the last 24 hours
- **Length:** Maximum 3 characters
- **Format:** String
- **Accepted Value:**

• **Field Name:** `txnActivityDay`

- **Description:** Number of transactions (successful and abandoned), in the last 24 hours, for this Cardholder's account with the 3DS Requestor, across all payment accounts
- **Length:** Maximum 3 characters
- **Format:** String
- **Accepted Value:**

• **Field Name:** `txnActivityYear`

- **Description:** Number of transactions (successful and abandoned), in the last year, for this Cardholder account with the 3DS Requestor, across all payment accounts
- **Length:** Maximum 3 characters
- **Format:** String
- **Accepted Value:**

• **Field Name:** `paymentAccAge`

- **Description:** Date that the payment account was enrolled in the Cardholder's account with the 3DS Requestor
- **Length:** 8 characters

- **Format:** String (Date Format: YYYYMMDD)
- **Accepted Value:**
- **Field Name:** `paymentAccInd`
 - **Description:** Indicates the length of time that the payment account was enrolled in the Cardholder's account with the 3DS Requestor
 - **Length:** 2 characters
 - **Format:** String
 - **Accepted Value:**
 - 01 = No account (guest check-out)
 - 02 = During this transaction
 - 03 = Less than 30 days
 - 04 = 30-60 days
 - 05 = More than 60 days
- **Field Name:** `shipAddressUsage`
 - **Description:** Date when the shipping address used for this transaction was first used with the 3DS Requestor
 - **Length:** 8 characters
 - **Format:** String (Date format = YYYYMMDD)
 - **Accepted Value:**
- **Field Name:** `shipAddressUsageInd`
 - **Description:** Indicates when the shipping address used for this transaction was first used with the 3DS Requestor
 - **Length:** 2 characters
 - **Format:** String
 - **Accepted Value:**
 - 01 = This transaction
 - 02 = Less than 30 days
 - 03 = 30-60 days
 - 04 = More than 60 days

• **Field Name:** `shipNameIndicator`

- **Description:** Indicates if the Cardholder name on the account is identical to the shipping name used for this transaction
- **Length:** 2 characters
- **Format:** String
- **Accepted Value:**
 - 01 = Account name identical to shipping name
 - 02 = Account name different to shipping name

• **Field Name:** `suspiciousAccActivity`

- **Description:** Indicates whether the 3DS Requestor has experienced suspicious activity (including previous fraud) on the Cardholder account
- **Length:** 2 characters
- **Format:** String
- **Accepted Value:**
 - 01 = No suspicious activity has been observed
 - 02 = Suspicious activity has been observed

homePhone Data Elements

• **Field Name:** `cc`

- **Description:** Country code section of the number
- **Length:** 1-3 characters
- **Format:** String
- **Accepted Value:** Refer to ITU-E.164 for additional information on format and length
- **Message Inclusion:** Conditional
- **Conditional Inclusion:** Required, if available, unless market or regional mandate restricts sending this information

• **Field Name:** `subscriber`

- **Description:** Subscriber section of the number
- **Length:** Variable, maximum 15 characters

- **Format:** String
- **Accepted Value:** Refer to ITU-E.164 for additional information on format and length
- **Message Inclusion:** Conditional
- **Conditional Inclusion:** Required, if available, unless market or regional mandate restricts sending this information

mobilePhone Data Elements

- **Field Name:** `cc`
 - **Description:** Country code section of the number
 - **Length:** 1-3 characters
 - **Format:** String
 - **Accepted Value:** Refer to ITU-E.164 for additional information on format and length
 - **Message Inclusion:** Conditional
 - **Conditional Inclusion:** Required, if available, unless market or regional mandate restricts sending this information
- **Field Name:** `subscriber`
 - **Description:** Subscriber section of the number
 - **Length:** Variable, maximum 15 characters
 - **Format:** String
 - **Accepted Value:** Refer to ITU-E.164 for additional information on format and length
 - **Message Inclusion:** Conditional
 - **Conditional Inclusion:** Required, if available, unless market or regional mandate restricts sending this information

workPhone Data Elements

- **Field Name:** `cc`
 - **Description:** Country code section of the number
 - **Length:** 1-3 characters
 - **Format:** String

- **Accepted Value:** Refer to ITU-E.164 for additional information on format and length
- **Message Inclusion:** Conditional
- **Conditional Inclusion:** Required, if available unless market or regional mandate restricts sending this information
- **Field Name:** `subscriber`
 - **Description:** Subscriber section of the number
 - **Length:** Variable, maximum 15 characters
 - **Format:** String
 - **Accepted Value:** Refer to ITU-E.164 for additional information on format and length
 - **Message Inclusion:** Conditional
 - **Conditional Inclusion:** Required, if available, unless market or regional mandate restricts sending this information

deviceRenderOptions Data Elements

- **Field Name:** `sdkInterface`
 - **Description:** Lists all SDK interface types supported by the device for displaying specific challenge user interfaces within the SDK
 - **Length:** 2 characters
 - **Format:** String
 - **Accepted Value:**
 - 01 = Native
 - 02 = HTML
 - 03 = Both
- **Field Name:** `sdkUiType`
 - **Description:** Lists all UI types supported by the device for displaying specific challenge user interfaces within the SDK
 - **Length:** 2 characters
 - **Format:** Array of String
 - **Accepted Value:**
 - 01 = Text

- 02 = Single Select
- 03 = Multi Select
- 04 = OOB
- 05 = HTML Other (valid only for HTML UI)

merchantRiskIndicator Data Elements

- **Field Name:** `deliveryEmailAddress`

- **Description:** For electronic delivery, the email address to which the merchandise was delivered
- **Length:** Maximum 254 characters
- **Format:** String
- **Accepted Value:**

- **Field Name:** `deliveryTimeframe`

- **Description:** Indicates the merchandise delivery timeframe
- **Length:** 2 characters
- **Format:** String
- **Accepted Value:**
 - 01 = Electronic delivery
 - 02 = Same day shipping
 - 03 = Overnight shipping
 - 04 = Two or more days shipping

- **Field Name:** `giftCardAmount`

- **Description:** For prepaid or gift card purchases, the purchase amount total of prepaid or gift cards, in major units (for example, USD 123.45 is 123).
- **Length:** Maximum 15 characters
- **Format:** String
- **Accepted Value:**

Field Name: `giftCardCount`

- **Description:** For prepaid or gift card purchases, the total count of individual prepaid or gift cards/codes purchased
- **Length:** 2 characters
- **Format:** String
- **Accepted Value:**

Field Name: `giftCardCurr`

- **Description:** For prepaid or gift card purchases, the currency code of the cards as defined in ISO 4217, other than those listed in Table A.5 Excluded Currency Code and Country Code Values
- **Length:** 3 characters
- **Format:** String
- **Accepted Value:**

Field Name: `preOrderDate`

- **Description:** For a pre-ordered purchase, the expected date that the merchandise will be available
- **Length:** 8 characters
- **Format:** String (Date format = YYYYMMDD)
- **Accepted Value:**

Field Name: `preOrderPurchaseInd`

- **Description:** Indicates whether the Cardholder is placing an order for merchandise with a future availability or release date
- **Length:** 2 characters
- **Format:** String
- **Accepted Value:**
 - 01 = Merchandise available
 - 02 = Future availability

Field Name: `reorderItemsInd`

- **Description:** Indicates whether the Cardholder is reordering previously purchased merchandise

- **Length:** 2 characters
- **Format:** String
- **Accepted Value:**
 - 01 = First time ordered
 - 02 = Reordered
- **Field Name:** `shipIndicator`
 - **Description:** Indicates the shipping method chosen for the transaction. Merchants must choose the shipping indicator code that most accurately describes the Cardholder's specific transaction, not their general business. If one or more items are included in the sale, use the shipping indicator code for the physical goods or if all goods are digital, use the shipping indicator code that describes the most expensive item.
 - **Length:** 2 characters
 - **Format:** String
 - **Accepted Value:**
 - 01 = Ship to Cardholder's billing address
 - 02 = Ship to another verified address on file with merchant
 - 03 = Ship to address that is different to the Cardholder's billing address
 - 04 = "Ship to store" / pick-up at local store (Store address to be populated in shipping address fields)
 - 05 = Digital goods (includes online services, electronic gift cards and redemption codes)
 - 06 = Travel and event tickets, not shipped
 - 07 = Other (for example, gaming, digital services not shipped, media subscriptions, etc.)

messageExtension Data Elements

- **Field Name:** `criticalityIndicator`
 - **Description:** A Boolean value indicating whether the recipient must understand the contents of the extension to interpret the entire message
 - **Length:**
 - **Format:** Boolean

- **Accepted Value:** true, false
 - **Field Name:** `data`
 - **Description:** The data carried in the extension
 - **Length:** Variable, maximum 8059 characters
 - **Format:** String (JSON text)
 - **Accepted Value:**
 - **Field Name:** `id`
 - **Description:** A unique identifier for the extension. Note: the payment system registered application provider identifier (RID) is required as a prefix of the ID
 - **Length:** Variable, maximum 64 characters
 - **Format:** String
 - **Accepted Value:**
 - **Field Name:** `name`
 - **Description:** The name of the extension data set as defined by the extension owner
 - **Length:** Variable, maximum 64 characters
 - **Format:** String
 - **Accepted Value:**
-

AdditionalInfo Data Elements

- **Field Name:** `clientId`
 - **Description:** Client ID
 - **Length:** 15 characters
 - **Format:** String
 - **Accepted Value:** Decimal numbers
 - **Message Inclusion:** Optional (this field will be excluded from RESTful JSON message when it has no value)

• **Field Name:**  `acsTransID`

- **Description:** Universally unique transaction identifier assigned by the ACS to identify a single transaction.
 - **Length:** 36 characters
 - **Format:** String
 - **Accepted Value:** Canonical format as defined in IETF RFC 4122. May utilise any of the specified versions if the output meets specified requirements
 - **Message Inclusion:** Required
-

AdapterTransactionResult Data Elements

• **Field Name:** `acsTransID`

- **Description:** Universally unique transaction identifier assigned by the ACS to identify a single transaction.
- **Length:** 36 characters
- **Format:** String
- **Accepted Value:** Canonical format as defined in IETF RFC 4122. May utilise any of the specified versions if the output meets specified requirements
- **Message Inclusion:** Required

• **Field Name:** `aReq`

- **Description:** The AReq message of the transaction.
- **Length:**
- **Format:** JSON object of AReq type, described in [AReq Data Elements](#).
- **Accepted Value:**
- **Message Inclusion:** Optional

• **Field Name:** `authResult`

- **Description:** The authentication result of the transaction.
- **Length:**

- **Format:** JSON object of AdapterAuthResult type, described in [AdapterAuthResult Data Elements](#).
 - **Accepted Value:**
 - **Message Inclusion:** Optional
 - **Field Name:** `additionalInfo`
 - **Description:** Some additional info for risk assessment
 - **Length:**
 - **Format:** JSON object of `AdditionalInfo` type, described in [AdditionalInfo Data Elements](#).
 - **Accepted Value:**
 - **Message Inclusion:** Optional
 - **Field Name:** `adapterReferenceData`
 - **Description:** Additional information about the risk assessment provided by the risk assessor as referenceData
 - **Length:**
 - **Format:** An object of type HashMap. The key is assessor `conditionName` and the corresponding value is returned as `referenceData` by assessor.
 - **Accepted Value:**
 - **Message Inclusion:** Optional
-

AdapterAuthResult Data Elements

- **Field Name:** `authenticationMethod`
 - **Description:** Indicates the authentication approach the ACS will use to authenticate the Cardholder, whether in the ARes message or what was used by the ACS when in the RReq message.
 - **Length:** 2 characters
 - **Format:** String
 - **Accepted Value:**
 - 01 = Static Passcode

- 02 = SMS OTP
- 03 = Key fob or EMV card reader OTP
- 04 = App OTP
- 05 = OTP Other
- 06 = KBA
- 07 = OOB Biometrics
- 08 = OOB Login
- 09 = OOB Other
- 10 = Other
- 11 = Push Confirmation
- 12–79 = Reserved for future EMVCo use (values invalid until defined by EMVCo)
- 80–99 = Reserved for DS use
- **Message Inclusion:** Optional
- **Field Name:** `authenticationType`
 - **Description:** Indicates the type of authentication method the issuer will use to challenge the Cardholder, whether in the ARes message or what was used by the ACS when in the RReq message.
 - **Length:** 2 characters
 - **Format:** String
 - **Accepted Value:**
 - 01 = Static
 - 02 = Dynamic
 - 03 = OOB
 - 04 = Decoupled
 - 05–79 = Reserved for EMVCo future use(values invalid until defined by EMVCo)
 - 80–99 = Reserved for DS use
 - **Message Inclusion:** Optional

• **Field Name:** `challengeCancel`

- **Description:** Indicator informing the ACS and the DS that the authentication has been cancelled.
- **Length:** 2 characters
- **Format:** String
- **Accepted Value:**
 - 01 = Cardholder selected “Cancel”
 - 02 = 3DS Requestor cancelled Authentication.
 - 03 = Transaction Abandoned
 - 04 = Transaction Timed Out at ACS – other timeouts
 - 05 = Transaction Timed Out at ACS – First CReq not received by ACS
 - 06 = Transaction Error
 - 07 = Unknown
 - 08 = Transaction Timed Out at SDK
 - 09-79 = Reserved for future EMVCo use (values invalid until defined by EMVCo)
 - 80-99 = Reserved for future DS use
- **Message Inclusion:** Optional

• **Field Name:** `interactionCounter`

- **Description:** Indicates the number of authentication cycles attempted by the Cardholder.
- **Length:** 2 characters
- **Format:** String
- **Accepted Value:**
- **Message Inclusion:** Optional

• **Field Name:** `rreqTransStatus`

- **Description:** Indicates whether a transaction qualifies as an authenticated transaction or account verification.
- **Length:** 1 character
- **Format:** String

- **Accepted Value:**

- Y = Authentication/ Account Verification Successful
- N = Not Authenticated/ Account Not Verified; Transaction denied
- U = Authentication/ Account Verification Could Not Be Performed; Technical or other problem, as indicated in ARes or RReq
- A = Attempts Processing Performed; Not Authenticated/Verified, but a proof of attempted authentication/verification is provided
- C = ChallengeRequired; Additional authentication is required using the CReq/CRes
- D = ChallengeRequired; Decoupled Authentication confirmed.
- R = Authentication/Account Verification Rejected; Issuer is rejecting authentication/ verification and request that authorisation not be attempted.

- **Message Inclusion:** Optional

- **Field Name:** `rreqTransStatusReason`

- **Description:** Provides information on why the Transaction Status field has the specified value.

- **Length:** 2 characters

- **Format:** String

- **Accepted Value:**

- 01 = Card authentication failed
- 02 = Unknown Device
- 03 = Unsupported Device
- 04 = Exceeds authentication frequency limit
- 05 = Expired card
- 06 = Invalid card number
- 07 = Invalid transaction
- 08 = No Card record
- 09 = Security failure
- 10 = Stolen card
- 11 = Suspected fraud
- 12 = Transaction not permitted to Cardholder

- 13 = Cardholder not enrolled in service
- 14 = Transaction timed out at the ACS
- 15 = Low confidence
- 16 = Medium confidence
- 17 = High confidence
- 18 = Very High confidence
- 19 = Exceeds ACS maximum challenges
- 20 = Non-Payment transaction not supported
- 21 = 3RI transaction not supported
- 22 = ACS technical issue
- 23 = Decoupled Authentication required by ACS but not requested by 3DS Requestor
- 24 = 3DS Requestor Decoupled Max ExpiryTime exceeded
- 25 = Decoupled Authentication was provided insufficient time to authenticate Cardholder. ACS will not make attempt
- 26 = Authentication attempted but not performed by the Cardholder
- 27–79 = Reserved for EMVCo future use (values invalid until defined by EMVCo)
- 80–99 = Reserved for DS use
- **Message Inclusion:** Optional
- **Field Name:** `resultsStatus`
 - **Description:** Indicates the status of the Results Request message from the 3DS Server to provide additional data to the ACS. This will indicate if the message was successfully received for further processing or will be used to provide more detail on why the Challenge could not be completed from the 3DS Client to the ACS.
 - **Length:** 2 characters
 - **Format:** String
 - **Accepted Value:**
 - 01 = RReq received for further processing
 - 02 = CReq not sent to ACS by 3DS Requestor (3DS Server or 3DS Requestor opted out of the challenge)

- 03 = ARes (Transaction Status = C or D) not delivered to the 3DS Requestor due to technical error 04–79 = Reserved for EMVCo future use (values invalid until defined by EMVCo)
 - 80–99 = Reserved for DS use
 - **Message Inclusion:** Optional
 - **Field Name:** `rreqAcsRenderingType`
 - **Description:** Identifies the ACS UI Template that the ACS will first present to the consumer.
 - **Length:**
 - **Format:** JSON object of `AcsRenderingType`, described in [AcsRenderingType Data Elements](#) section.
 - **Accepted Value:**
 - **Message Inclusion:** Optional
-

+ AcsRenderingType Data Elements

- **Field Name:** `acsInterface`
 - **Description:** This is the ACS interface that the challenge will present to the Cardholder.
 - **Length:** 2 characters
 - **Format:** String
 - **Accepted Value:**
 - 01 = Native UI
 - 02 = HTML UI
 - **Message Inclusion:** Optional
- **Field Name:** `acsUiTemplate`
 - **Description:** Identifies the UI Template format that the ACS first presents to the consumer.
 - **Length:** 2 characters
 - **Format:** String

- **Accepted Value:**

- 01 = Text
- 02 = Single Select
- 03 = Multi Select
- 04 = OOB
- 05 = HTML Other

- **Message Inclusion:** Optional

Current Supported Versions

- 1
- 1.1
- 1.2
- 1.3
- 1.3.1
- 1.4.0
- 1.5.0